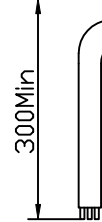
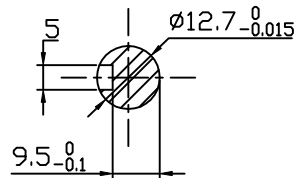
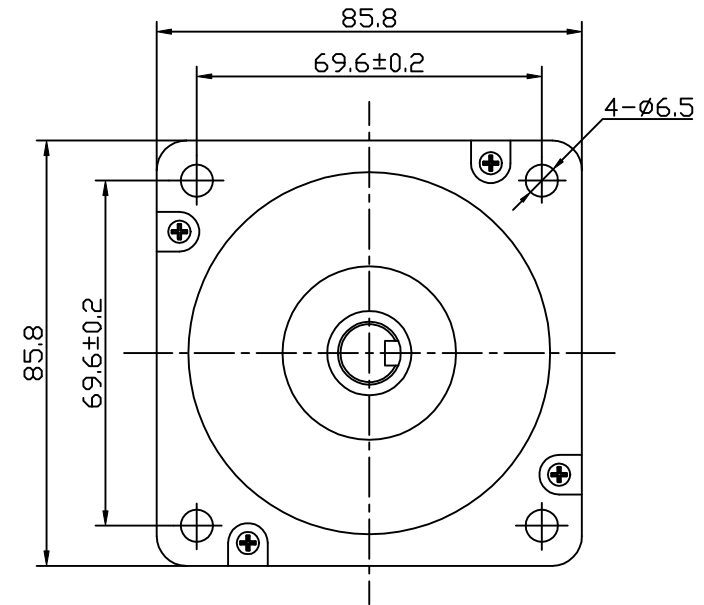
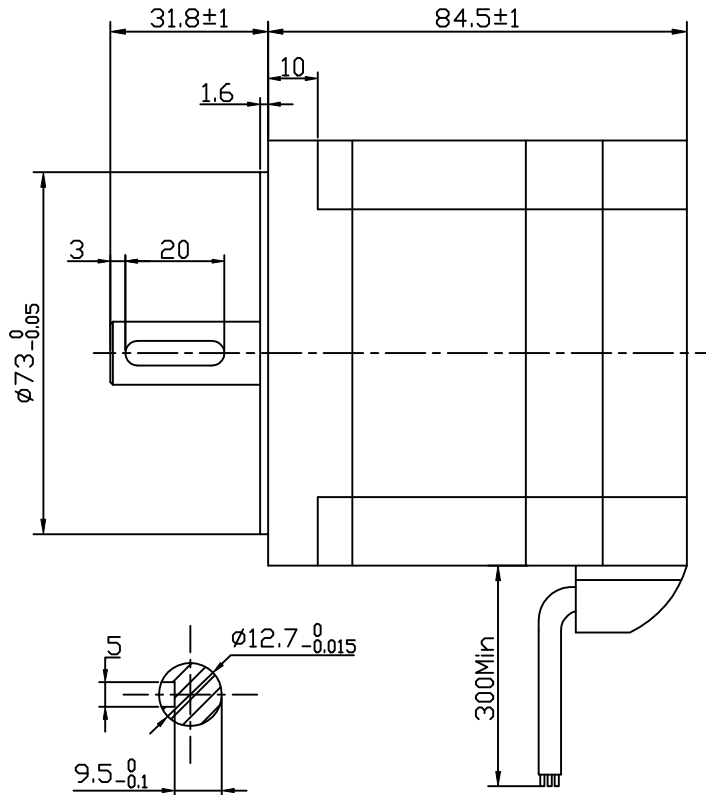
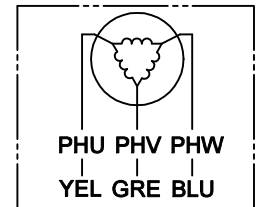
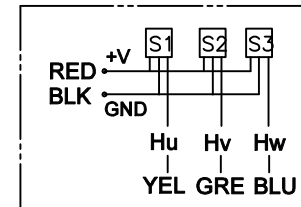


Dimension:
Unit=mm



5x5x20

Connection diagram:



Hall sensor cable
Note: hall sensor power supply
voltage +5 to +20VDC

Wiring cable

ROTATION: CW VIEWED FROM OUTPUT SHAFT

MANUFACTUER MODEL	JK86BLS71-03-X004
PHASE TO PHASE RESISTANCE	0.18 OHMS
NOMINAL VOLTAGE	24 VDC
NO LOAD SPEED	3500±10% RPM
NO LOAD CURRENT	1.6 Amps Max.
RATED TORQUE	0.7 N-m
RATED SPEED	3000±10% RPM
OUTPUT POWER	220 W
BACK EMF CONSTANT	6.9 V/kRPM
TORQUE CONSTANT	0.066 N-m/A
INSULATION CLASS	B

ELECTRICAL CONNECTION TABLE			
+5V	RED	红	UL1007 26 AWG
HALL U	YEL	黄	
HALL V	GRE	绿	
HALL W	BLU	蓝	
GND	GND	黑	UL1015 18 AWG
PHASE U	YEL	黄	
PHASE V	GRE	绿	
PHASE W	BLU	蓝	

REV.	QTY.	No.	SIG.	DATE
DESIGN	ZY	23.04.27	STD.	
CHECK				
PROC.			APPR.	

Title:			www.kalatec.com.br		
Specification			KTC-86BL71-03-X004		
CLS.MAK	WEIGHT	SCALE			
PAGE: 1/1					