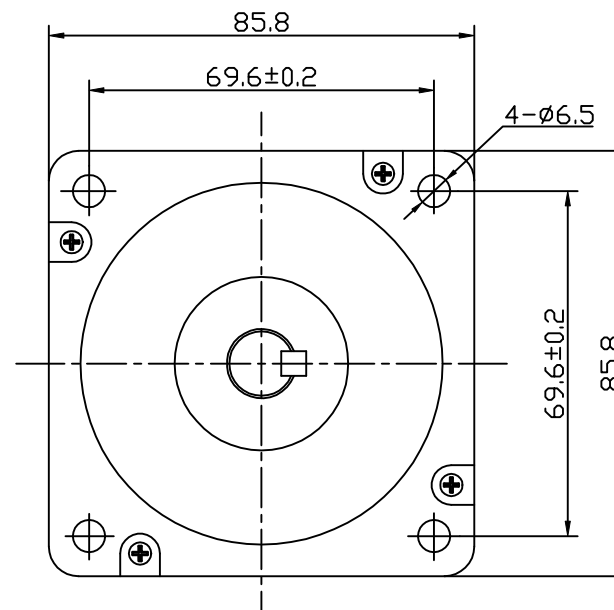
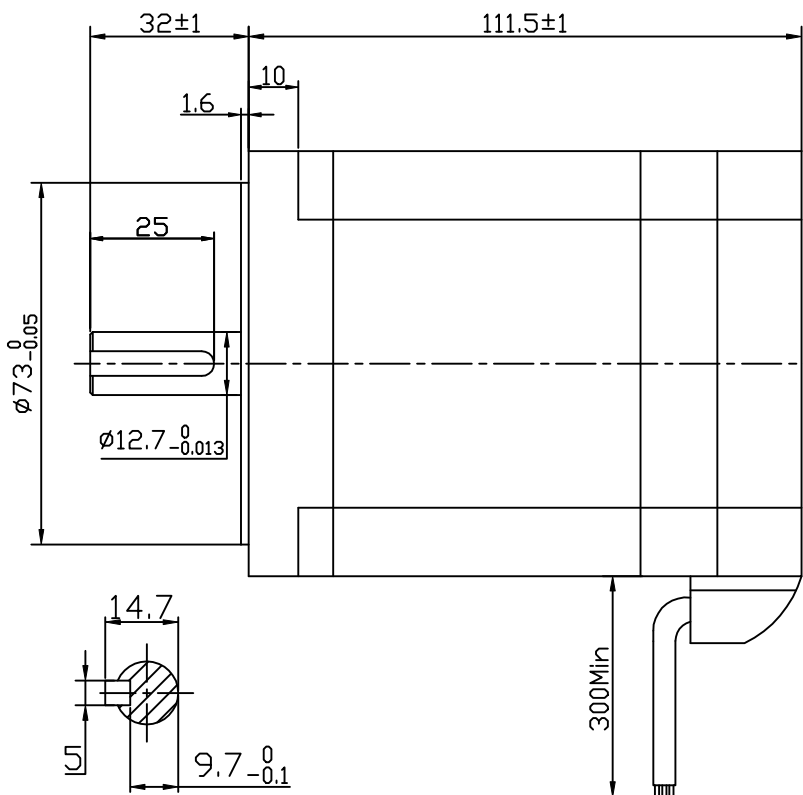
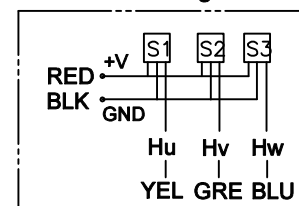


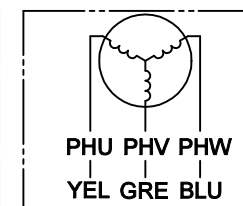
Dimension:
Unit=mm



Connection diagram:



Hall sensor cable
Note: hall sensor power supply
voltage +5 to +20VDC



Wiring cable

ROTATION: CW VIEWED FROM OUTPUT SHAFT

MANUFACTUER MODEL	JK86BLS98-X046
NUMBER OF POLES	8
PHASE TO PHASERESISTANCE	0.2 OHMS
NOMINAL VOLTAGE	48 VDC
NO LOAD SPEED	3700±10% RPM
NO LOAD CURRENT	2.2 Amps Max.
RATED TORQUE	1.4 N-m
RATED SPEED	3000±10% RPM
OUTPUT POWER	440 W
BACK EMF CONSTANT	13 V/kRPM
TORQUE CONSTANT	0.124 N-m/A
INSULATION CLASS	B

ELECTRICAL CONNECTION TABLE

+5V	RED	红	UL1007 26 AWG
HALL U	YEL	黄	
HALL V	GRE	绿	
HALL W	BLU	蓝	
GND	GND	黑	UL1015 18 AWG
PHASE U	YEL	黄	
PHASE V	GRE	绿	
PHASE W	BLU	蓝	

REV.	QTY.	No.	SIG.	DATE
DESIGN	ZY	23.04.27	STD.	
CHECK				
PROC.			APPR.	

Title:
Specification
CLS.MAK WEIGHT SCALE
PAGE: 1/1

KALATEC
AUTOMACAO
KTC-86BLS98-J-X046
www.kalatec.com.br