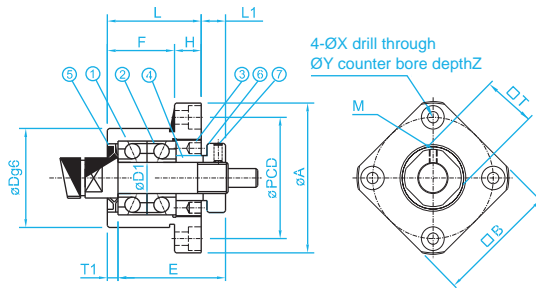
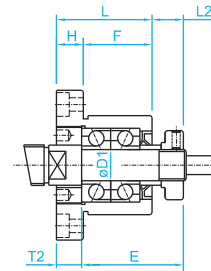


FK Series (Fixed End)



Method A



Method B

D	g6
28	-0.007 -0.020

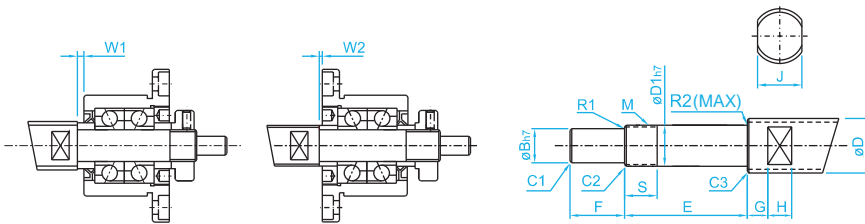
Code	Items	pcs
①	Housing	1 PCS
②	Bearing	1 SET
③	Lid	1 PCS
④	Spacer	2 PCS
⑤	Seal	2 PCS
⑥	Lock Nut	1 PCS
⑦	Screw with Washer	1 PCS

Unit:mm

Model No.	D1	A	F	L	E	Dg6	H	PCD
FK-8	8	43	14	23	26	28	9	35

M	B	L1	T1	L2	T2	X	Y	Z	T	Bearing Model
M3	35	7	4	8	5	3.4	6.5	4	14	708ATYDFC8P5

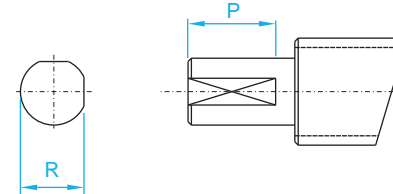
Sugestão Usinagem Padrão kalatec



Model No.	Diameter	D1	B	E	F	M
FK-8	Ø10, Ø12	8	6	35	9	M8x1

Opcionais na Usinagem (Necessário solicitar)

H1 Type

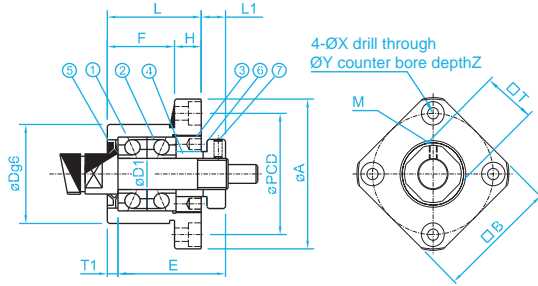


Tolerance

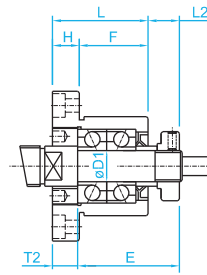
Dimension (mm)		h unit 0.001
Above	Under	h
6	10	-2 -15

S	Chamfering			Circular Radius		H1		W1	W2	Model FK
	C1	C2	C3	R1	R2	R	P			
15	0.5	0.5	0.5	0.3	0.6	5.6	7	1.5	0.5	FK-8

FK Series (Fixed End)



Method A



Method B

D	g6
34	-0.009 -0.025
36	-0.009 -0.025
40	-0.009 -0.025
57	-0.010 -0.029
63	-0.010 -0.029
75	-0.010 -0.029

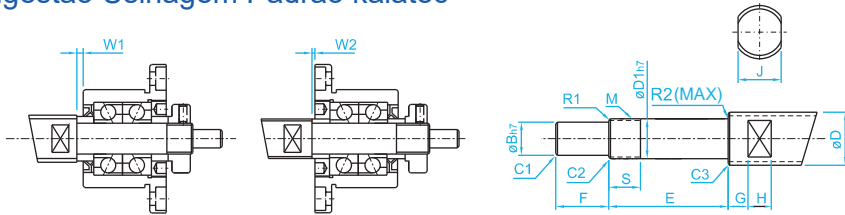
Code	Items	pcs
①	Housing	1 PCS
②	Bearing	1 SET
③	Lid	1 PCS
④	Spacer	2 PCS
⑤	Seal	2 PCS
⑥	Lock Nut	1 PCS
⑦	Screw with Washer	1 PCS

Unit: mm

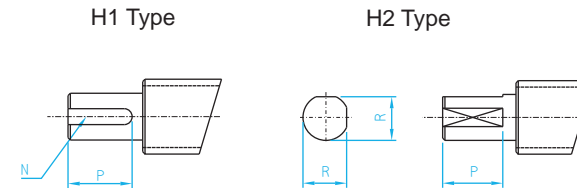
Model No.	D1	A	F	L	E	Dg6	H	PCD
FK-10	10	52	17	27	29.5	34	10	42
FK-12	12	54	17	27	29.5	36	10	44
FK-15	15	63	17	32	36	40	15	50
FK-20	20	85	30	52	50	57	22	70
FK-25	25	98	30	57	60	63	27	80
FK-30	30	117	32	62	61	75	30	95

M	B	L1	T1	L2	T2	X	Y	Z	T	Bearing Model
M3	42	7.5	5	8.5	6	4.5	8	4	16	7000ATYDFC8P5
M3	44	7.5	5	8.5	6	4.5	8	4	19	7001ATYDFC8P5
M3	52	10	6	12	8	5.5	9.5	6	22	7002ATYDFC8P5
M4	68	8	10	12	14	6.6	11	10	30	7204ATYDFC8P5
M5	79	13	10	20	17	9	15	13	35	7205ATYDFC8P5
M6	93	14	12	17	18	11	17.5	15	40	7206ATYDFC8P5

Sugestão Usinagem Padrão kalatec



Opcionais na Usinagem (Necessário solicitar)



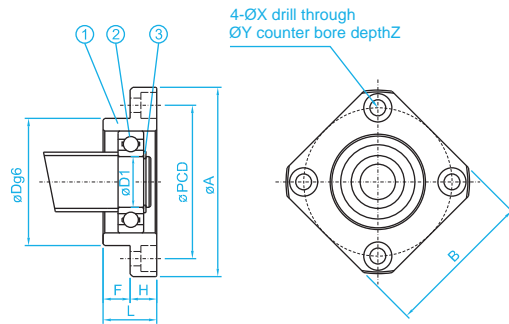
Tolerance

Dimension (mm)		h unit 0.001
Above	Under	h
6	10	-2 -15
10	18	-3 -18
18	30	-3 -21

Model No.	Diameter	D1	B	E	F	M
FK-10	Ø12, Ø14, Ø15	10	8	36	15	M10x1
FK-12	Ø14, Ø15, Ø16	12	10	36	15	M12x1
FK-15	Ø18, Ø20	15	12	49	20	M15x1
FK-20	Ø25, Ø28	20	17	64	25	M20x1
FK-25	Ø32, Ø36	25	20	76	30	M25x1.5
FK-30	Ø40, Ø50	30	25	72	38	M30x1.5

S	J	G	H	Chamfering			Circular Radius		H1		H2		W1	W2	Model FK
				C1	C2	C3	R1	R2	N	P	R	P			
11	10	5	7	0.5	0.5	0.5	0.3	0.6	2x1.2	11	7.5	11	0.5	0.5	FK-10
11	13	6	8	0.5	0.5	0.5	0.3	0.6	3x1.8	12	9.5	12	0.5	0.5	FK-12
13	16	6	9	0.5	0.5	0.5	0.3	0.6	4x2.5	16	11.6	16	4	2	FK-15
17	21	8	11	0.5	0.5	0.5	0.5	0.6	5x3.0	21	16	21	1	-3	FK-20
20	27	10	13	0.5	0.5	0.5	0.5	0.6	6x3.5	25	19	25	5	-2	FK-25
25	32	10	15	0.5	0.5	0.5	0.5	0.6	8x4	32	23.5	32	-3	-6	FK-30

FF Series (Simple End)



D	g6
22	-0.007 -0.020
28	-0.007 -0.020
34	-0.009 -0.025
40	-0.009 -0.025
57	-0.010 -0.029
63	-0.010 -0.029
75	-0.010 -0.029

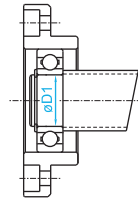
Code	Items	pcs
①	Housing	1 PCS
②	Bearing	1 PCS
③	C-Ring	1 PCS

Model No.	D1	L	H	F	Dg6	A
FF-6	6	10	6	4	22	36
FF-10	8	12	7	5	28	43
FF-12	10	15	7	8	34	52
FF-15	15	17	9	8	40	63
FF-20	20	20	11	9	57	85
FF-25	25	24	14	10	63	98
FF-30	30	27	18	9	75	117

Unit:mm

PCD	B	X	Y	Z	C-Ring	Bearing Model
28	28	3.4	6.5	4	C6	606ZZ
35	35	3.4	6.5	4	C8	608ZZ
42	42	4.5	8	4	C10	6000ZZ
50	52	5.5	9.5	5.5	C15	6002ZZ
70	68	6.6	11	6.5	C20	6204ZZ
80	79	9	14	8.5	C25	6205ZZ
95	93	11	17.5	11	C30	6206ZZ

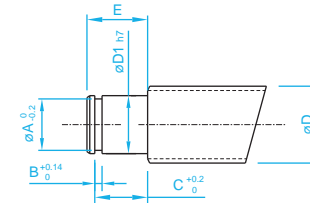
Sugestão Usinagem Padrão kalatec



Model No.	Diameter	D1	E
FF-6	Ø10, Ø12	6	9
FF-10	Ø12, Ø14, Ø15	8	10
FF-12	Ø14, Ø15, Ø16	10	11
FF-15	Ø18, Ø20	15	13
FF-20	Ø25, Ø28	20	19
FF-25	Ø32, Ø36	25	20
FF-30	Ø40, Ø50	30	21

Tolerance

Dimension (mm)		h unit 0.001
Above	Under	h
6	10	-2 -15
10	18	-3 -18
18	24	-3 -21



C-Ring			Model FF
A	B	C	
5.7	0.8	6.8	FF-6
7.6	0.9	7.9	FF-10
9.6	1.15	9.15	FF-12
14.3	1.15	10.15	FF-15
19	1.35	15.35	FF-20
23.9	1.35	16.35	FF-25
28.6	1.75	17.75	FF-30