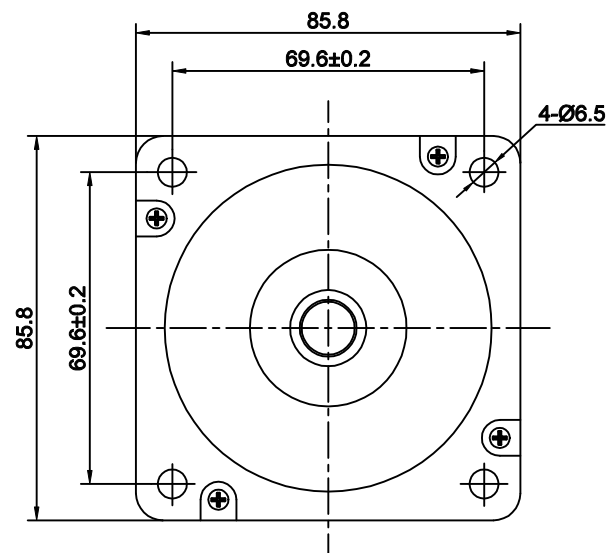
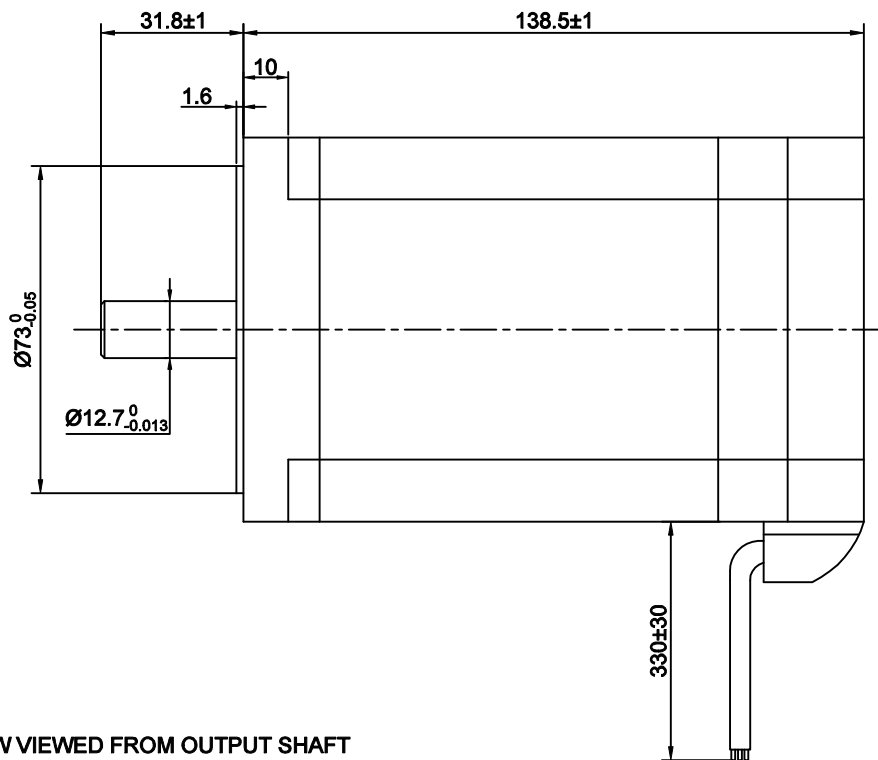
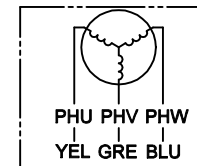
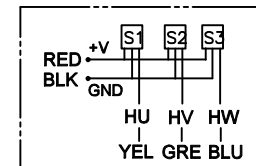


DC BRUSHLESS MOTOR SPECIFICATION

外形圖 (DIMENSIONS) unit=mm



Motor Connection diagram:



Hall sensor cable
Note: hall sensor power supply voltage +5 to +20VDC

Wiring cable

ROTATION: CW VIEWED FROM OUTPUT SHAFT

NUMBER OF POLES	极数	8
PHASE TO PHASE RESISTANCE	相电阻	0.13 OHMS
RATED VOLTAGE	额定电压	48 VDC
NO LOAD SPEED	空载转速	3700±10% RPM
NO LOAD CURRENT	空载电流	2.8 Amps Max.
RATED TORQUE	额定扭矩	2.1 N-m
RATED SPEED	额定转速	3000±10% RPM
RATED CURRENT	额定电流	19 Amps
OUTPUT POWER	额定功率	660 W
BACK EMF CONSTANT	反电动势系数	13 V/kRPM
TORQUE CONSTANT	扭矩常数	0.124 N-m/A
INSULATION CLASS	绝缘等级	B

ELECTRICAL CONNECTION TABLE		
+5V	RED	红
HALL U	YEL	黄
HALL V	GRE	绿
HALL W	BLU	蓝
GND	GND	黑
PHASE U	YEL	黄
PHASE V	GRE	绿
PHASE W	BLU	蓝

UL1007
26 AWG

FF46-1
AF2.5mm²

版本 REV.	REVISION RECORD		日期 DATE
设计 DESIGN	ZY	2024.03.23	标准化 STANDARDIZATION
制图 DRAWN			
校对 PROOFREAD			审核 CHECKED
工艺 PROCESSED			批准 APPROVED

COMPANY		www.kalatec.com.br			
		DWG.NO. KTC-86BLS125-J-X048			
MATERIAL		变更标识 ECN SIGN	※	SIZE	A4
REV.	A	比例 SCALE	页 SHEET	1 of 1	

